

## Cabin Hire

Below is a small selection of our product range, for more detailed information and availability you can [click here to contact us](#) to find out more information and advice.

### Anti-Vandal Units Converted Sea Containers



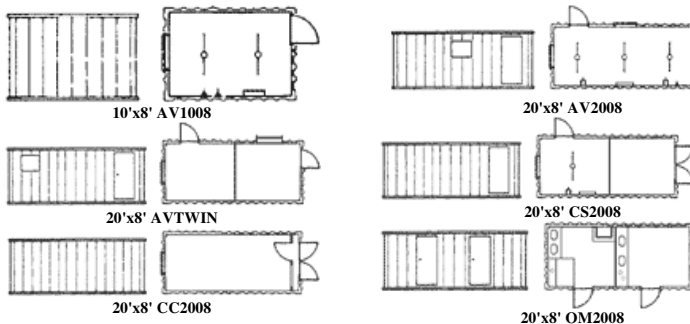
The Metal clad AVU comes in two sizes 20'x8' (6m x 2.4m) or 10'x8'(3m x 2.4m)

The 20'x8' can be partitioned to give 2 rooms and all units have metal lockable shutters.

High specification door locks and a decorative wood grain interior finish.

for more information on the Anti Vandal Units you can contact us on 0800 917 0196 or [click here](#) to email us.

### Anti-Vandal Units Cabins



for more information on the Anti-Vandal Units you can contact us on 0800 917 0196 or [click here](#) to email us.

### Anti-Vandal Units Stores

Metal Sea containers 10'x8' and 20'x8'

Each comes with full width metal doors fitted with high specification security hasp and staple protected by cowl shield and fitted with IO lever high security close shacked padlock.

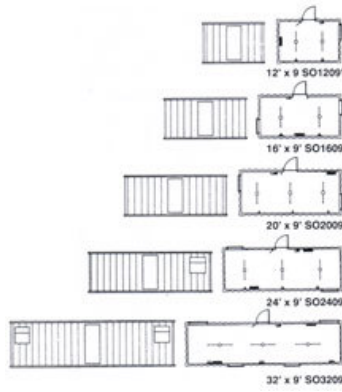
for more information on the Anti-Vandal Units you can contact us on 0800 917 0196 or [click here](#) to email us.

### Security Units Cabins



These metal clad Units have been specifically designed and built to provide a high level of security combined with a higher internal specification than the AVU.

Units are available in 12' - 16' - 20' - 24'



and 32' long / 3.6m-4.8m-6m-7.2m-9.6m. All by 9' (2.7m) wide.

for more information on the Security Units you can contact us on 0800 917 0196 or [click here](#) to email us.

Security Units Stores



Each comes with 4' / 1.2m width metal door fitted with high specification security hasp and staple with IO lever high security close shackled padlock. Also fitted with 5 lever Mortice door locks.

for more information on the Security Units you can contact us on 0800 917 0196 or [click here](#) to email us.

		SS1209	SS1609	SS2009	SS2409	SS3209
<b>DIMENSIONS (mm)</b>						
Overall -	Length	3850	5000	6150	7300	9500
	Width	2820	2820	2820	2820	2820
Door -	Length	2820	2820	2820	2820	2820
	Width	1252	1252	1252	1252	1252
<b>WEIGHT EMPTY (tonnes) approx</b>		1.05	1.18	1.30	1.80	2.26

## Event Hire

Below is a small selection of our product range, for more detailed information and availability you can [click here to contact us](#) to find out more information and advice.

### Regency - The ultimate in no mains toilets!



A Trailer mounted self contained toilet unit comprising of 2 Regency toilet units mounted on a specially designed trailer.

Regency is the ultimate in single no mains portable toilets.

**Each Regency toilet is equipped with a fully flushing China WC, Wash hand basin inset into a vanity unit, controlled hot water is provided via an instantaneous water heater. There is an electric light and mirror. Soap, paper towel and toilet roll dispenser are provided replenished and ready for use.**



A 20Mtr length of cable c/w RCD is supplied for each **Regency** Unit, each of which requires an independent 13amp 240 volt supply.

**You can contact us on 0800 917 0196 or [click here](#) to email us.**

### Deluxe No Mains Toilet



**Fully self contained "Flushing" toilet unit comes complete with cold water handwash facility with mirror, coat hook, toilet roll holder with 2 toilet rolls and translucent roof.**

**The Deluxe toilet is a lightweight UPVC unit and is delivered, positioned and set up ready for use.**

**Dimensions:** 90"H X 44"W X 48D  
(220cm x 112cm x 122cm)

**Weight:** 200lbs (91kg)

**You can contact us on 0800 917 0196 or [click here](#) to email us.**

### Deluxe Plus No Mains Toilet Electric Hotwash Unit

Fully self contained flushing toilet unit comes complete with controlled warm water handwash facility, electric light, mirror, toilet roll holder, soap and paper towel dispenser.



A 20Mtr length of cable c/w RCD is supplied. Each Deluxe Plus unit requires its own 240 Volt 13Amp supply.

**You can contact us on 0800 917 0196 or [click here](#) to email us.**

---

## Special Needs



- Expansive hexagonal interior for easy wheelchair access.
- Complies with ADA specifications.
- Circular safety grab bars.v
- Low 1/2" ground-level floor.
- Specifically designed for the physically and visually disabled.

**You can contact us on 0800 917 0196 or [click here](#) to email us.**

---

## The "MENS" Room



Spacious interior with 2 urinal troughs. Sufficient room for up to 6 users at a time.

Each trough has sufficient capacity for approx 1000 uses.

Ethol hand wash facility.

---

## Shower Unit

Internal Dimensions 1.6m x 1.6m (5'3" x 5'3") Providing more than enough room for showering, drying and changing.

Electrically powered the unit has a large 2.4Ltr hot water reservoir to ensure a sufficiency of warm water for a shower. These units operate off 110v electric supply and come with 20Mtrs of cable and if required a 240v to 110v step down transformer.

### Services Requirement

#### Electricity



Either 240v 13amp Supply in which case you need us to supply a step down transformer.

*OR*

110v 13amp Supply

**Water**

Mains supply for connections to 15mm input pipe.

**Soakaway or Foul Drainage**

To dispose of waste water

## Toilet Hire

Below is a small selection of our product range, for more detailed information and availability you can [click here](#) to contact us to find out more information and advice.

All Mains toilets require an electric supply - Mains water via 15mm input - Connection to Foul system or Tank via a 4" (100mm) foul pipe

### Regency - A prestigious no main toilet Fully complies with HSE Guidelines



Each Regency toilet is equipped with a fully flushing China WC, Wash hand basin inset into a vanity unit, controlled hot water is provided via an instantaneous water heater. There is an electric light and mirror. Soap, paper towel and toilet roll dispenser are provided replenished and ready for use.

You can contact us on 0800 917 0196 or [click here](#) to email us.

### Solo - Steel clad no mains portable toilet Fully complies with HSE Guidelines



**NO WATER?**

**NO FOUL DRAINAGE?**

**NO ELECTRICITY?**

**NO PROBLEM**

The solo steel clad truly no mains toilet is the answer to your sanitary problem.

The Solo portable toilet gives the highest level of facilities and hygiene where water, drainage and electricity are unavailable.

Each Solo is equipped with a Fully flushing china WC, a large hand basin sufficient to submerge forearm. Controlled hot water is supplied from a LPG operated instantaneous water heater.

Soap, paper towel and toilet roll dispensers are supplied replenished and ready for use.

An electric 240v or 110v version of this unit is also available.

**Deluxe Plus No Mains Toilet**  
Electric Hotwash Unit  
Fully complies with HSE Guidelines



Fully self contained flushing toilet unit comes complete with controlled warm water handwash facility, electric light, mirror, toilet roll holder, soap and paper towel dispenser.

Can be supplied in either 240v or 110v form.

**You can contact us on 0800 917 0196 or [click here](#) to email us.**

**Deluxe No Mains Toilet**  
Plastic clad lightweight fully self contained toilet



Fully self contained "Flushing" toilet unit comes complete with cold water handwash facility with mirror, coat hook, toilet roll holder with 2 toilet rolls and translucent roof.

The Deluxe toilet is a lightweight UPVC unit and is delivered, positioned and set up ready for use.

**You can contact us on 0800 917 0196 or [click here](#) to email us.**

**Special Units**

**The "MENS" Room**



Spacious interior with 2 urinal troughs. Sufficient room for up to 6 users at a time.

Each trough has sufficient capacity for approx 1000 uses.

Ethol hand wash facility.

**Shower Unit**

Internal Dimensions 1.6m x 1.6m (5'3" x 5'3") Providing more than enough room for showering, drying and changing.

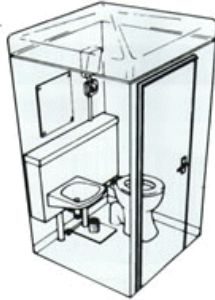
Electrically powered the unit has a large 2.4Ltr hot water reservoir to ensure a sufficiency of warm water



for a shower. These units operate off 110v electric supply.



### Single Mains Toilet Either 240v or 110v



All units are supplied with wash hand basins, W/C, urinals, water heaters. Ladies toilets are also available.

**Dimensions:** 1143mm x 1120mm x 2438mm

**Weight:** 153kg

**Water Input:** 15mm Pipe

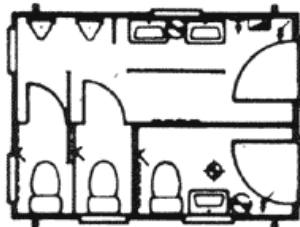
**Foul Outlet:** 4" Foul Pipe

**Electrics:** 240v 16amp

for more information on the Single Toilet Units you can contact us on 0800 917 0196 or [click here](#) to email us.

## Toilet Blocks & Tanks

2+1 (12' x 9')(3.6m x 2.7m)



WC1221

### TimberClad Jack Leg Toilet

240v Electric Supply

15mm Water Input

(4") Foul output

Split into 2 areas

**Large area** has 2 WC cubicles

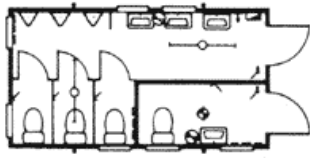
1 water heater with swivel spout to serve 2 wash basins, 2 urinals c/w automatic flush system

**Small Area** has 1 WC pan & Cistern, 1 Water heater over wash hand basin.

3+1 (16' x 9')(4.8m x 2.7m)

### TimberClad Jack Leg Toilet

Services as above



WC1631

Split into 2 areas

Large area  
3 WC cubicles  
2 water heaters with swivel spouts to serve  
3 wash basins  
3 urinals c/w automatic flush system

Small Area  
1 WC pedestal & Cistern  
1 Water heater over  
1 wash hand basin.